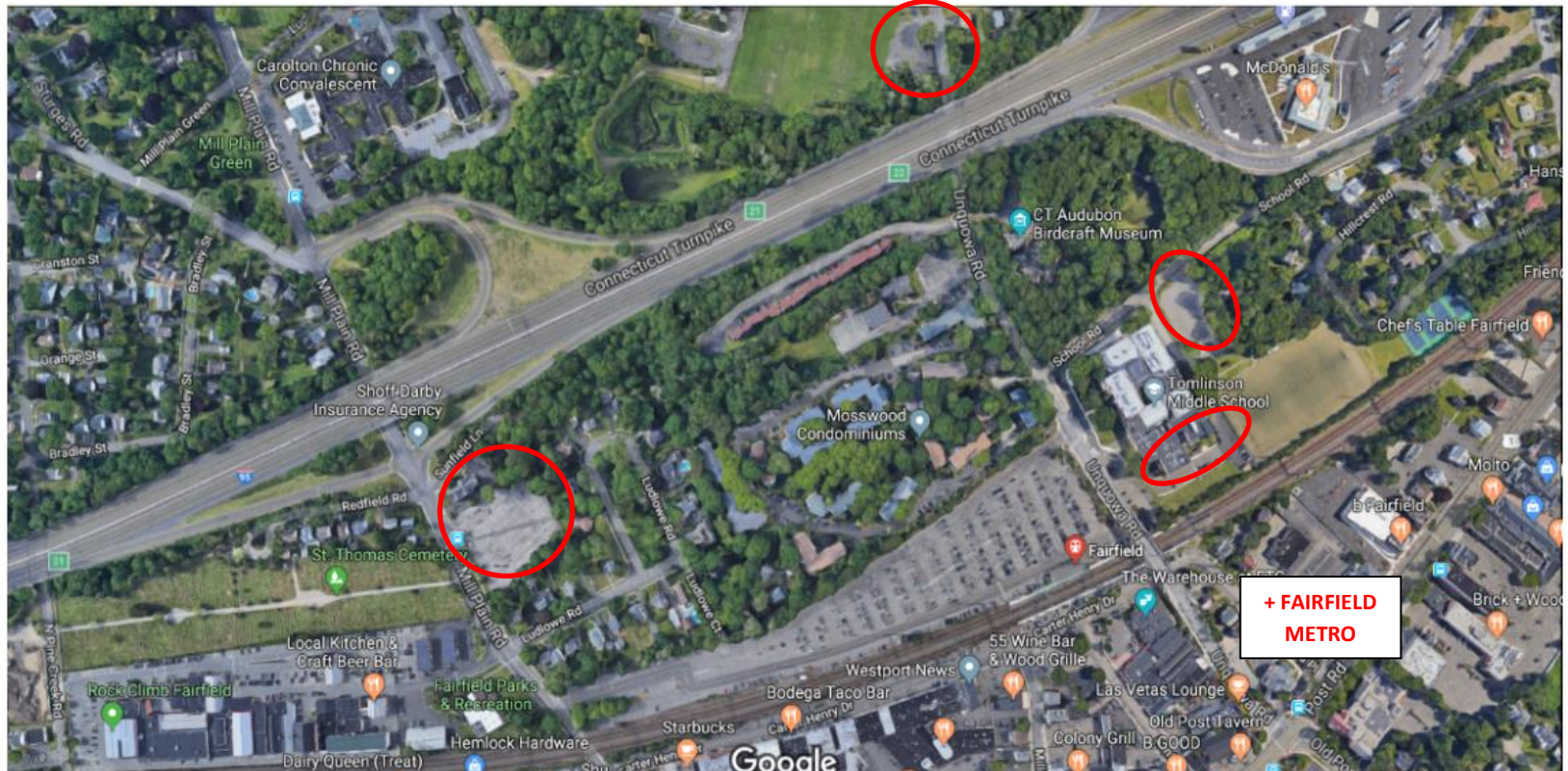


FAIRFIELD CENTER TRAIN STATION

**NO OVERNIGHT PARKING
JULY 5 – JULY 19TH
VIOLATORS MAY BE TOWED**

REPAVING JULY 8TH THRU JULY 19TH

Unquowa Side of Lot To Be Worked On First. ENTRANCE CLOSED ON SIDE UNDERGOING REPAIR.



Beginning July 8th, available parking at:

- o Open half of Main Lot
 - o Mill Plain Lot
 - o Lower Tomlinson
 - o Upper Tomlinson (limited)
 - o Lot immediately south of RLMS on Unquowa
 - o Fairfield Metro Lot will honor our permits with following stipulations:
 - Access to lot through CASH LANE ONLY
 - New Permits (Orange) MUST be displayed on rear-view mirror or driver-side of windshield. NO Dashboards
 - Must park prior to 10am
 - Day parkers must pay the \$6.00 day fee to attendant or trailer
- METRO RESERVES RIGHT TO TURN AWAY PERMIT & DAY PARKERS IF LOT IS FULL OR ABOVE RULES NOT FOLLOWED**

QUESTIONS? Call Parking Authority 203-256-3053